



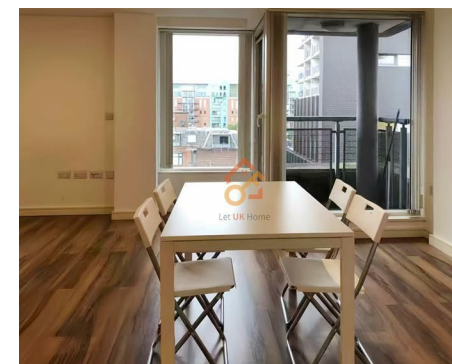
Let **UK** Home

3 Bedrooms

Flat

**Located
in Manchester**

£2,200 Per Month



pmadmin@letukhome.co.uk

<https://www.letukhome.co.uk/>

01615219812



1 Lower Ormond Street Manchester

M1 5QD



Let UK Home are pleased to offer this stunning three bedroom apartment in The Quadrangle set in the city center of Manchester.

This property comprises a large bright open plan kitchen and living room with great views, three double bedrooms (master en-suite), a large family sized bathroom and ample storage.

This premium residence offers comprehensive secure living facilities for residents. The building features professional security service, smart access entry and full-site CCTV surveillance to ensure a safe living environment. On-site amenities including bicycle storage and communal leisure spaces perfectly accommodate daily living and social needs.

The property enjoys unparalleled academic resources. The University of Manchester North Campus, Manchester Metropolitan University, and the Royal Northern College of Music are all within easy walking distance. It is also close to the John Rylands Library and the Sister Innovation Zone.

Boasting outstanding transportation connectivity, the apartment offers effortless travel around the city and nationwide. St Peter's Square Metrolink Station, Oxford Road Station and Deansgate Station are all a short walk away, with fast links to Manchester Piccadilly Station and regular trains to London. Direct routes to Manchester Airport enable seamless intercity travel and global commuting.

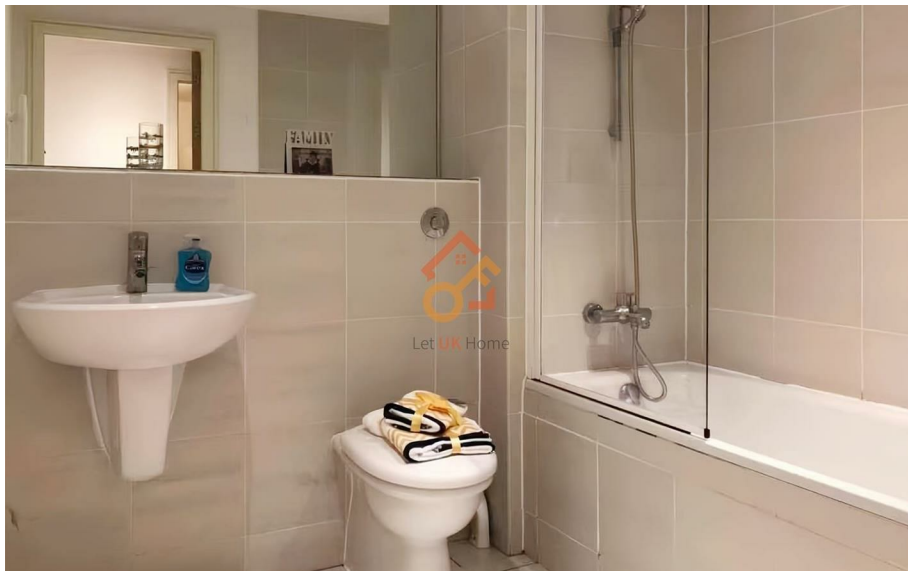
The surrounding area provides rich daily and leisure facilities. Multiple 24-hour

1 Lower Ormond Street Manchester

£2,200 Per Month



- 7th Floor
- Bike Storage
- Close to Transport Links
- Close to Universities
- 24h Security& CCTV
- Communal Leisure Spaces
- Close to Local Shops





Let **UK** Home

1/F, St James Tower 7 Charlotte
Street
Manchester
M1 4DZ

01615219812

pmadmin@letukhome.co.uk



Total floor area

64 square metres

Council Tax Band: E

Local Authority:

Agents Note: Whilst every care has been taken to prepare these particulars, they are for guidance purposes only. All measurements are approximate and are for general guidance purposes only and whilst every care has been taken to ensure their accuracy, they should not be relied upon and potential buyers/tenants are advised to recheck the measurements.

Energy Efficiency Rating		Current	Potential
Very energy efficient - lower running costs			
(92 plus) A			
(81-91) B			
(69-80) C			
(55-68) D			
(39-54) E			
(21-38) F			
(1-20) G			
Not energy efficient - higher running costs			
England & Wales	EU Directive 2002/91/EC		

<https://www.letukhome.co.uk/>